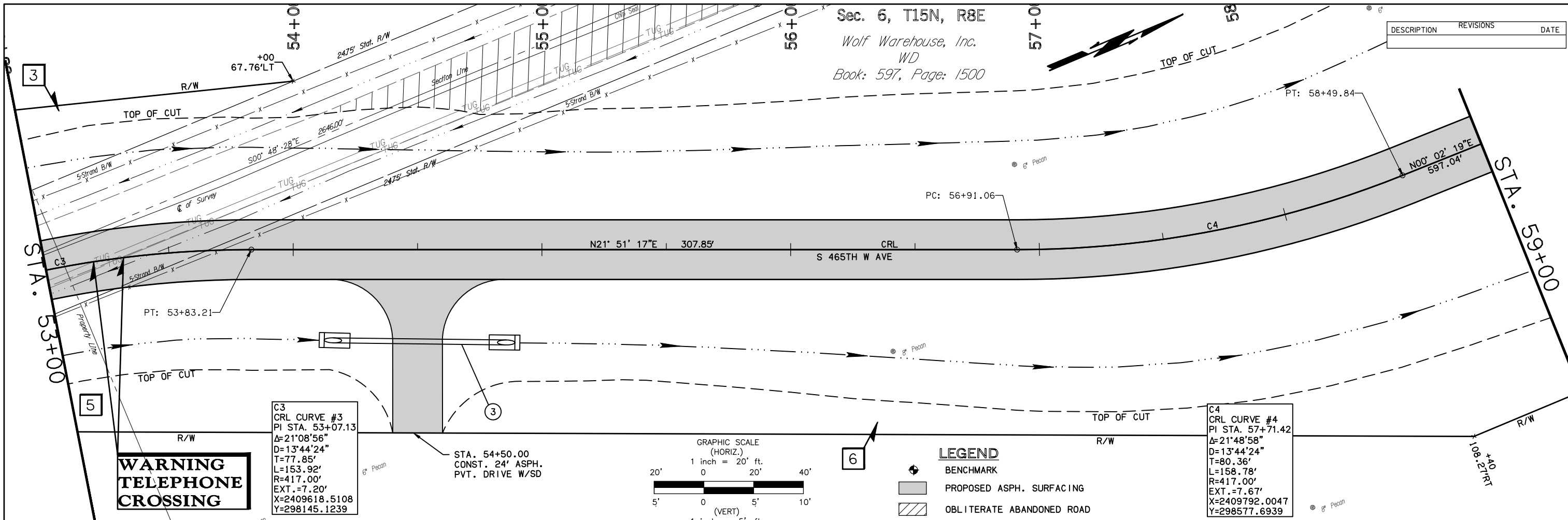


Sec. 6, T15N, R8E

Wolf Warehouse, Inc.
WD
Book: 597, Page: 1500

DESCRIPTION	REVISIONS	DATE



Station	Elevation	Notes
53+00	817.11	STR. #3 STA 54+50.00, CONSTR. 24" X 77' CGSP ROUND W/CET FL SOUTH=808.29 FL NORTH=807.91
53+46.46	816.85	STA. 53+46.46 END FULL SUPER
54+00	816.68	DITCH LT & RT
54+54.46	816.50	STA. 54+54.46 REVERSE CROWN
54+66.49	816.39	VPC 54+66.49 ELEV. = 816.39
55+00	816.34	STA. 54+93.46 LEVEL CROWN
55+36.46	816.29	STA. 55+36.46 BEGIN NORMAL CROWN
55+41.81	816.29	STA. 55+41.81 END NORMAL CROWN
55+55.00	816.35	VPI 55+55.00 ELEV = 816.00 L = 177.02 K = 119.03
55+80.81	816.43	STA. 55+80.81 LEVEL CROWN
56+00	816.55	STA. 56+19.81 REVERSE CROWN
56+43.51	816.89	VPT 56+43.51 ELEV. = 816.93
57+00	817.31	STA. 57+27.81 BEGIN FULL SUPER
58+00	818.15	STA. 58+13.09 END FULL SUPER
59+00	819.62	VPI 59+50.00 ELEV = 820.15 L = 130.00 K = 238.23

Friday, July 28, 2017, 10:19:12 AM
W:\13-850 Br.181A Little Deep Fork Ck - Creek 3\CIV3D\PLANS\850-PLAN AND PROFILE.dwg